

## CONTACT

### Technical manager

Olivier Mariette mobile +41-79-445 58 50

### Association Pro-Velma

Rue du Maupas 8bis tel. +41-21-648 13 92  
CH – 1004 LAUSANNE fax +41-21-648 13 93  
SWITZERLAND e-mail [info@velma.ch](mailto:info@velma.ch)  
url [www.velma.ch](http://www.velma.ch)

## STAFF

### VELMA staff is composed of 8 persons :

- 5 actors
- 1 lighting designer
- 1 sound engineer
- 1 production manager

### The following technical staff should be made available by the organiser from set up time :

- 1 sound technician
- 1 light technician
- 1 stage manager

### Set up :

- 3 shifts (4 hours each) with the technical staff are required

### Show / control room :

- light console is run by VELMA lighting designer
- sound console is run by VELMA sound engineer

### Dismantling :

- 1 shift is required

## PAPER WORK

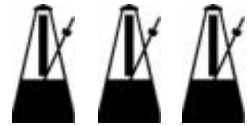
### Please provide our technical manager the following documents at least 1 month in advance :

- 1 technical sheet of the venue (scaled stage plan, lighting hook-up points, light & sound equipment lists)
- 1 contact list with the organiser's staff details
- 1 access plan to the venue

## STAGE

### Minimum size :

- opening : 8 meters (26 ft)
- depth : 8 meters (26 ft)
- light frame / truss height : 5 meters (16 ft, over stage)



## PROPS

### Required from the organiser :

- 2x chairs (if possible sober, black, different from the auditorium ones, for instance "classical concert" style)
- 1x mike stand (black)
- possibly floor covered with black dance carpet (if concrete or light floor)

### Brought by Velma :

- 3x music stands
- 1x acoustic guitar

## FILM PROJECTIONS

### Required from the organiser :

- 1x video projector (compact "beamer" type, min 1000 Lumen, max 10 kg)
- 1x projection screen on stand (approx. 2 x 1.5 m, light and collapsible)
- S-Video and stereo audio cables from the projector on stage to the light console

### Brought by Velma :

- 5x Super-8 film projectors (MIDI-controlled)
- 2x projection screens on stand (approx. 0.8 x 0.6 m)
- 1x MIDI interface
- 1x miniDV video camera (used as tape player at light console)

## SOUND SYSTEM

### Required from the organiser :

- 1x mixing console 8 inputs with parametric EQ and high-pass filters, and 6 outputs (that can be separately addressed, e.g. 4 groups + stereo mix)
- 1x stereo active amplified PA system (min 2x 500W) with sub-bass loudspeaker (to be placed under the auditorium if possible)
- 1x stereo amplified monitoring system (min 2x 200W)
- 1x UHF transmitter-receiver mike (in-hand)
- 1x multicore XLR cable from mixing console to stage (6 mike lines, 2 monitor lines, + lines to connect amplifiers)
- 4x 10 meters XLR cables

## LIGHTING

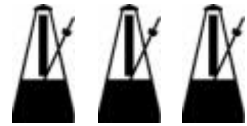
### Required from the organiser :

- 1x console (min 24 channels) with memories
- 13x profiles (minimum 650 W, focus adaptable)
- 8x PC 1 kW
- 5x PC 500W (alternatively 650W or 1 kW is possible)
- 9x PAR 64 (4x CP61 and 5x CP62)
- 2x flood light 1 kW

### Brought by Velma :

- 4x footlights (ramp with 7x dichroid 17V / 150W each, coupled in twos)
- 4x mini-spotlight (dichroid 110V / 250W, coupled in twos)

# VELMA Technical sheet *RONDO*



- 3x spotlight for music stands
- 2x gobos

Position	Provider	Channel	Qty	Type	Type & Wattage	Gel (Lee)	Special
1	O	1	1	<b>Profile (short)</b>	1kW 50°	R 373	
2	O	2	2	<b>Profile (short)</b>	1kW 50°	R 373	
3	O	4	1	<b>PC</b>	500W	152	
4	O	5	1	<b>PC</b>	500W	152	
5	O	6	1	<b>PC</b>	500W	152	
6	V	7	2	<b>"Mickey"</b>	Mole-Richardson 250W	-	Blackwrap
7	V	8	2	<b>"Mickey"</b>	Mole-Richardson 250W	-	Blackwrap
8	O	9	2	<b>Flood light</b>	1kW	-	
9	O	13	2	<b>PC</b>	1kW	079	
10	O	14	2	<b>PC</b>	1kW	079	
11	O	15	1	<b>PC</b>	1kW	079	
12	O	16	2	<b>PC</b>	1kW	079	
13	V	17	1	<b>Music stand light</b>	60 W	-	
14	V	18	2	<b>Music stand light</b>	60 W	-	
15	V	23	2	<b>Footlight</b>	Dichroid 1 kW	-	
16	V	24	2	<b>Footlight</b>	Dichroid 1 kW	-	
17	O	25	1	<b>Profile (medium)</b>	1kW 30°	061	Iris
18	O	26	1	<b>Profile (medium)</b>	1kW 30°	061	Iris
19	O	27	1	<b>Profile (medium)</b>	1kW 30°	061	Iris
20	O	28	1	<b>Profile (medium)</b>	1kW 30°	061	Iris
21	O	29	2	<b>Profile (long)</b>	1kW 12°	-	Gobo
22	O	30	2	<b>Profile (medium)</b>	1kW 30°	2x 013	
23	O	32	1	<b>Profile (medium)</b>	1kW 30°	323	
24	O	33	1	<b>Profile (medium)</b>	1kW 30°	2x 013	
25	O	37	2	<b>PAR 64</b>	CP 61 1kW	013	
26	O	38	2	<b>PAR 64</b>	CP 61 1kW	013	
27	O	39	1	<b>PAR 64</b>	CP 62 1kW	013	
28	O	40	1	<b>PC</b>	1kW	-	
29	O	41	2	<b>PAR 64</b>	CP 62 1kW		
30	O	42	2	<b>PAR 64</b>	CP 62 1kW		
31	O	44	1	<b>PC</b>	500W	R 373	
32	O	46	1	<b>PC</b>	500W	R 373	
33	O	48	?	<b>(Audience light)</b>	?	?	

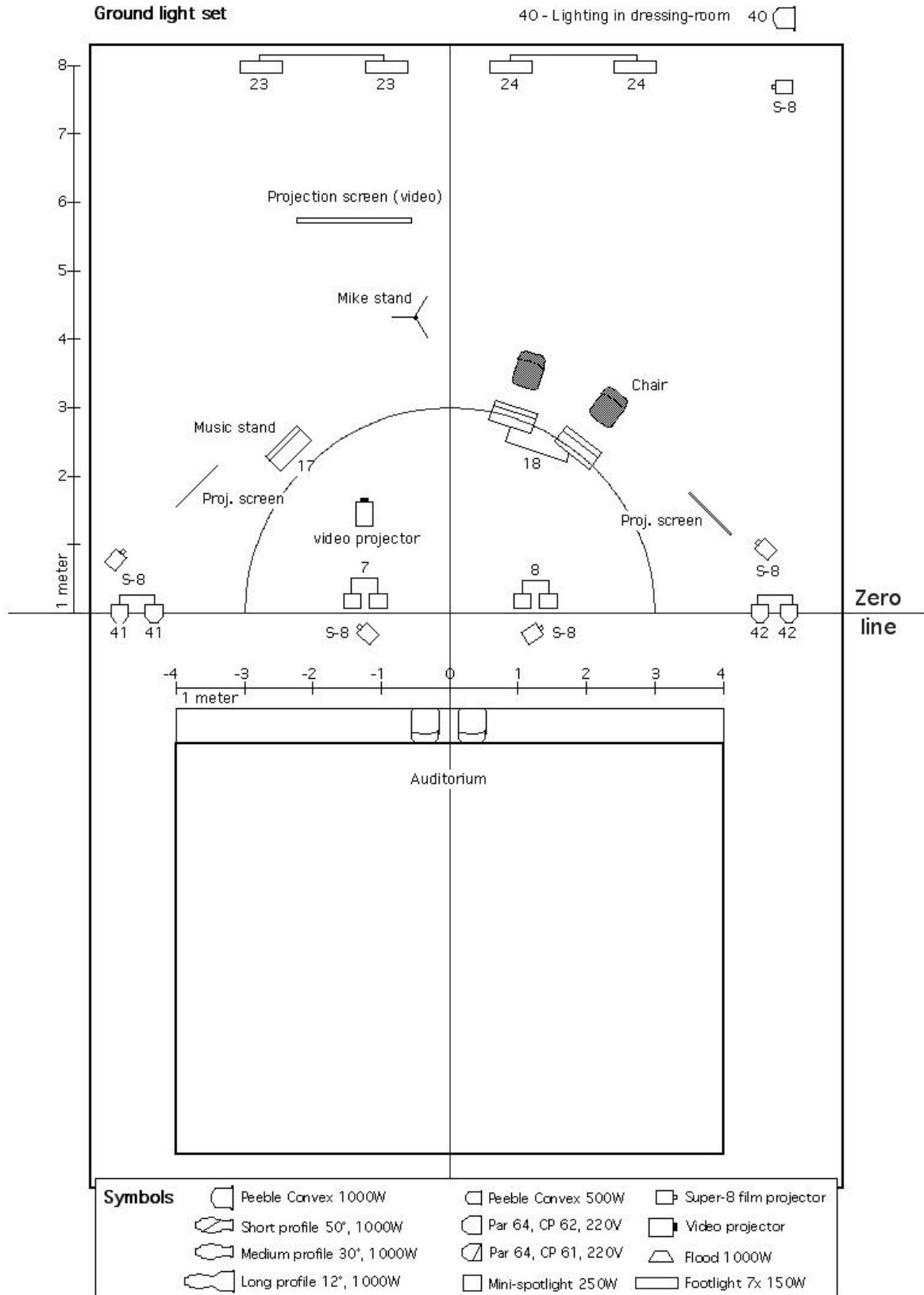
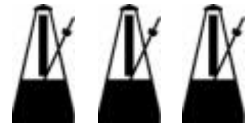
O : organiser

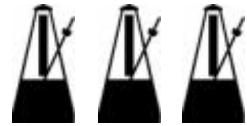
V : Velma

Profile angles are indicative

R : Rosco

# VELMA Technical sheet *RONDO*





Truss light set

